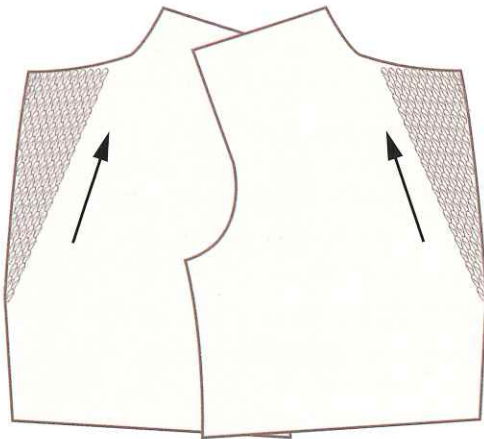
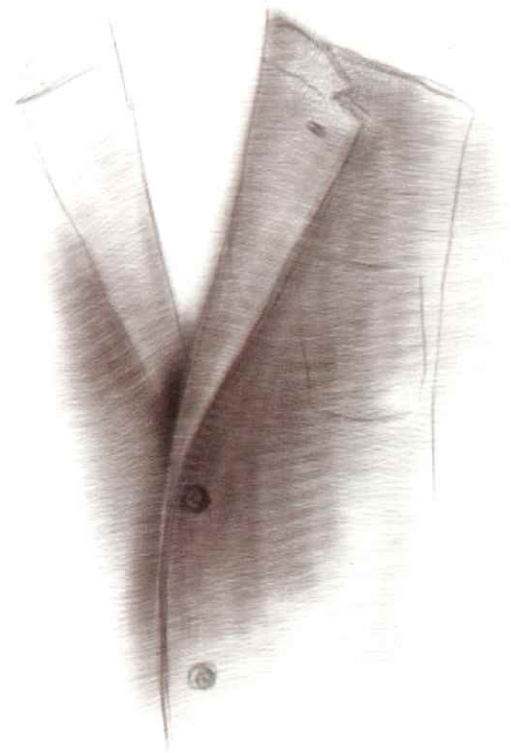
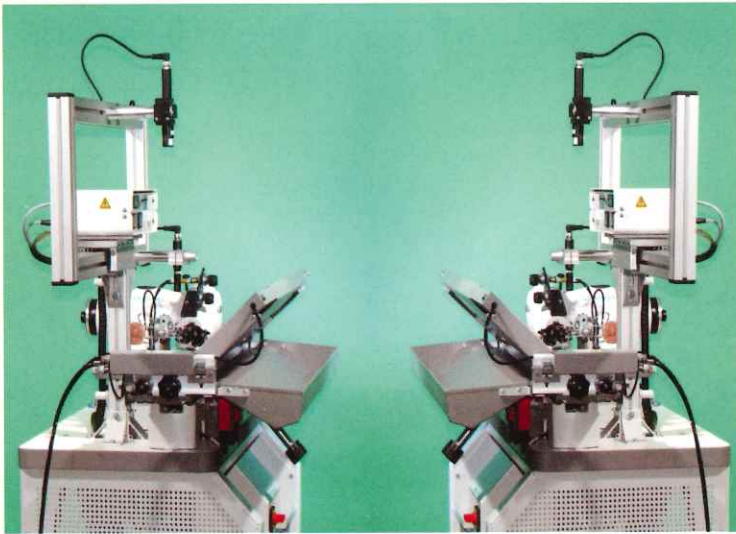


单线自动驳头暗缝机

Single thread rollpadding machine



单线自动驳头暗缝机

电子控制自动车缝单元，夹克和外套的优质和高效滚轴卷衬。每日可缝制600至105上衣并符合最高质量要求：驳头（最长63厘米）这台机器上滚轴卷衬绝对不会扭曲和皱褶形状，这意味着可以保持稳定和柔软的外观形状。而且，因为机器会准确地自动感应每一片的驳头形状，所以KA-ED是非常容易操作。

Single thread roll-padding machine

Electronically controlled automatic sewing unit for high-quality and efficient roll-padding of lapels of jackets and coats. With a daily output of 600 to 1050 jackets it meets highest quality requirements: Lapels (up to 63 cm) roll-padded on this machine have a perfect shape and are absolutely free of twist and pucker. This means high stability of shape and very soft wear comfort. Moreover the KA-ED is very easy to operate since the individual lapel shape is sensed automatically and accurately.



	速度 / Speed 机器最高缝速 / mechanically admissible 建议车缝速度 / Recommended rated speed	3000 min-1 2800 min-1
	针码长度 / stitch length	6,5 mm
	上送布齿和差动送布架 / top feed & differential carriage transport	
	固定布顶 / fixed plunger	
	针板开口 / needle plate opening	6,0 mm
	缝线深度调节 / stitch depth regulation digital	数字式 / digital
	缝线间距 / seam distance	4 - 15 mm
	机针型号 / needle system 机针号数 / needle size	Strobel 1669 Strobel 4669 80 - 100 65 - 90
	2组车缝机器 / 2 sewing units	
	断线停车感应 / thread stop motion	
	Laser Positioning 镭射灯定位器 / laser positioning	选配件 / optional

电机功率 / power consumption	2 x 1040 W
电压 / electricity	190 - 240 V / 50-60 Hz
V型皮带 / V-belt profile	10 x 6 mm
同步皮带 / toothed belt profile	HTD 5M-9
机头同步齿轮 / toothed belt pulley/machine	Z = 38
同步皮带 - 送布架齿轮 / tooth belt - wheel carriage	Z = 40 - HTD 5M-15-HP
最短缝线 / shortest seam	3 cm
最长前襟长度 / max. lapel length	63 cm
每日8小时产量 / daily output (8 h)	500 - 1050 / 对前襟 / pair of lapels
针步类型 / stitch type	103/单线锁链暗缝线步 / single thread chain stitch
建议缝线 / recommended thread	PES No 120 - 200
空气压力 / pneumatic connection	5 - 6 bar
平均空气用量 / average air consumption	2 x 245 l / h
机器净重 / weight without packaging	2 x 158 kg
工作噪音 / operating noise at 2200 min-1 nach DIN 45635-48-1 KL3	LpAm 77 dB(A)